

# *Saving Water for the Future*

**Adurel** encapsulates your roof with a long term renewable membrane with the added advantage of being non toxic to water and cooler to greatly reduce water losses due to evaporation.

*Thermoplastic coatings resist dirt pick up and stay cleaner for long term cooling.*

*Easily cleaned and maintained.*

*Utilizes existing drainage.*

*Adaptable to any roof including metal.*

*Reduces bird loitering and nesting.*

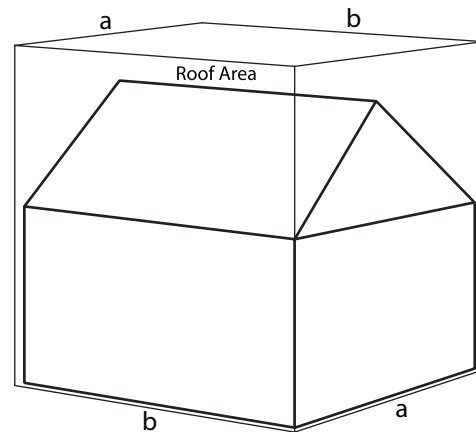
*Water can be used as gray water or made potable with additional filtration.*

*Adurel Roof Systems are Energy Star, FM and UL rated and meet NSF 151 for rainwater catchment and recovery.*

*Holds water in storage to reduce sewer system overloads in times of heavy rainfall.*

*Savings on the Adurel and reduced water bills can pay for itself in a few years.*

*Beyond Roofing to Energy*



The catchment area of the roof is a simple calculation of width x length of the house. To find out how much rain will be collected, take the area of the roof, multiply by the annual rainfall amount, then multiply by .5618 to arrive at the average number of gallons yearly.



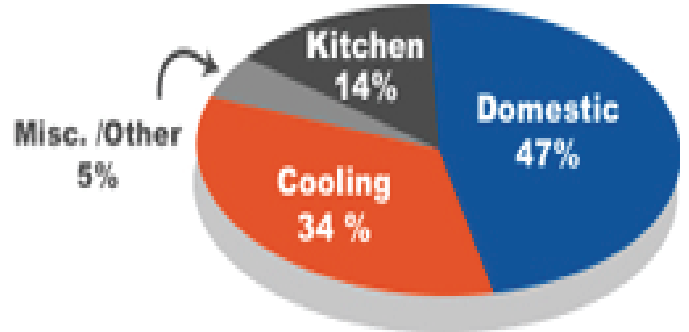
# Water will become scarce without conservation, recovery and recycling

*A 500,000 sq.ft. roof will capture over 15 million gallons of water per year of average rainfall.*

## Choose the right cistern.

The size of the cistern depends on the amount of water to be collected and cost restraints. Choose a cistern that fits the needs of the water harvesting system. Collecting a small volume of water is better than collecting none.

Cistern Type	Advantages	Disadvantages
Fiberglass Tanks	Prevents algae growth and evaporation, rust resistant, durable	Higher initial costs, degradable, requires exterior coating
Polyurethane Tanks	Various sizes and shapes, alterable, inexpensive, moveable	Can deteriorate over time if not treated for UV radiation
55 Gallon Steel Drums	Available, durable, moveable, great for small systems	Prone to corrosion, rust, and/or toxins
Galvanized Tanks	Inexpensive, attractive, moveable, alterable	Prone to rust, higher long term costs
Plaster Cisterns	Low profile, inexpensive, can alter color	Large footprint, unalterable, not able to be moved
Concrete Tank - ferrocement, stone or concrete block	Durable, permanent	Potential cracking, difficult to maintain



Office buildings with sizes ranging from 145,000 square feet to 1.5 million square feet had an annual water usage of 3 to 43 million gallons. Based on the above formula these same buildings



*There is no equal*

*Fax back or call for a free estimate.*

**Adurel Fax #:** 262-632-3446  
**Office:** 800-860-5834  
**E-Mail:** ralphb@adurel.com

\_\_\_\_\_  
**Contact Information – Name**

\_\_\_\_\_  
**Phone, E-mail or Fax**

## Division of Adurel International Inc

Solar Electric Integration, Rainwater Catchment, Sustainable High Performance Roofing

[www.adurel.com](http://www.adurel.com)